



**Construction of Naval Air Station
Patuxent River began April 4, 1942.**



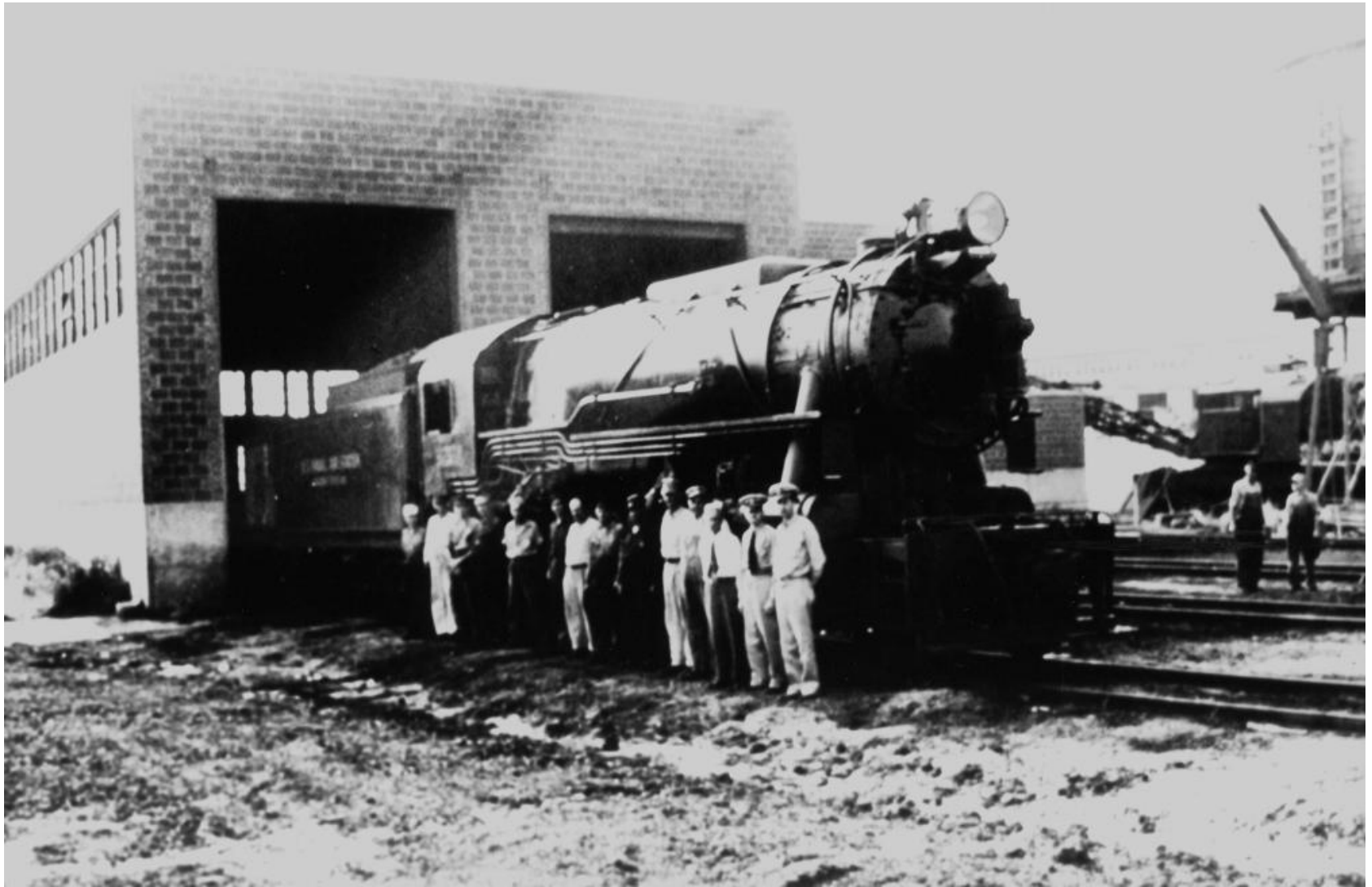
**Contractors' repair facilities were built at
NAS Patuxent River in 1943.**



Cars enter the Pax River main gate house northeast in 1942.



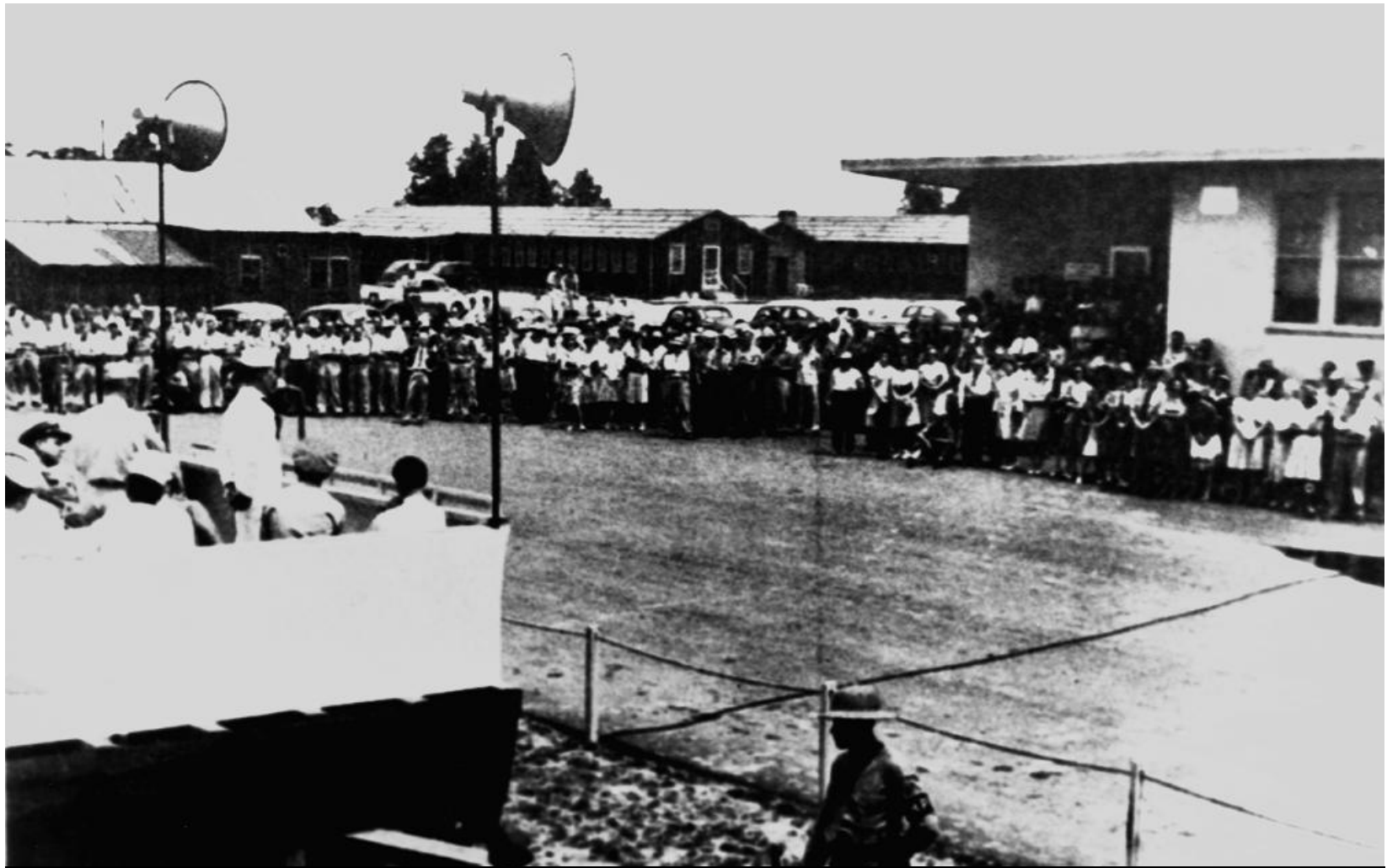
Temporary barracks were built for construction workers at Pax River in 1943.



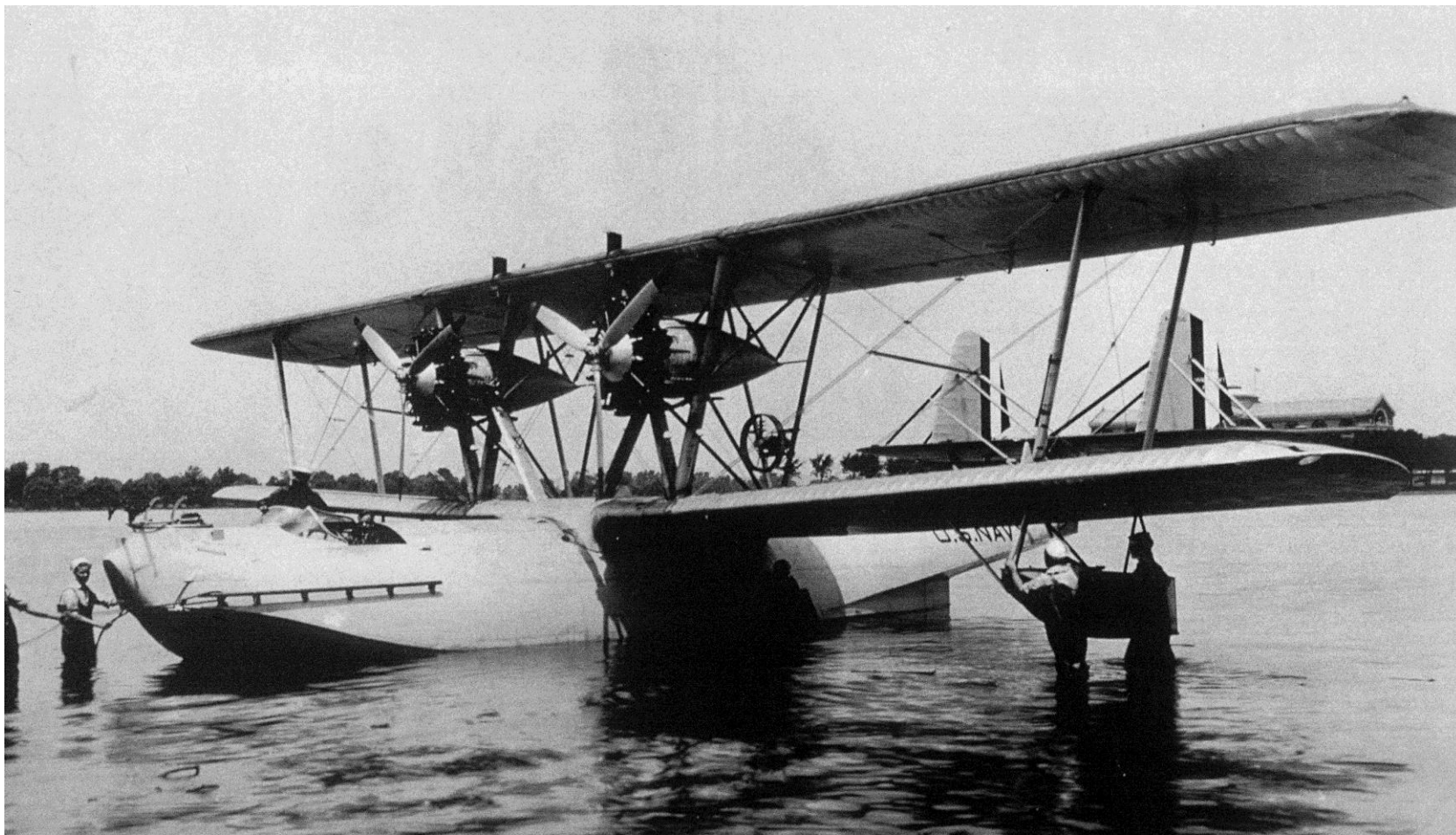
The U.S. government operated a railroad line from Brandywine to Pax River from 1944 to 1945.



The first flight to NAS Pax River was in 1943.



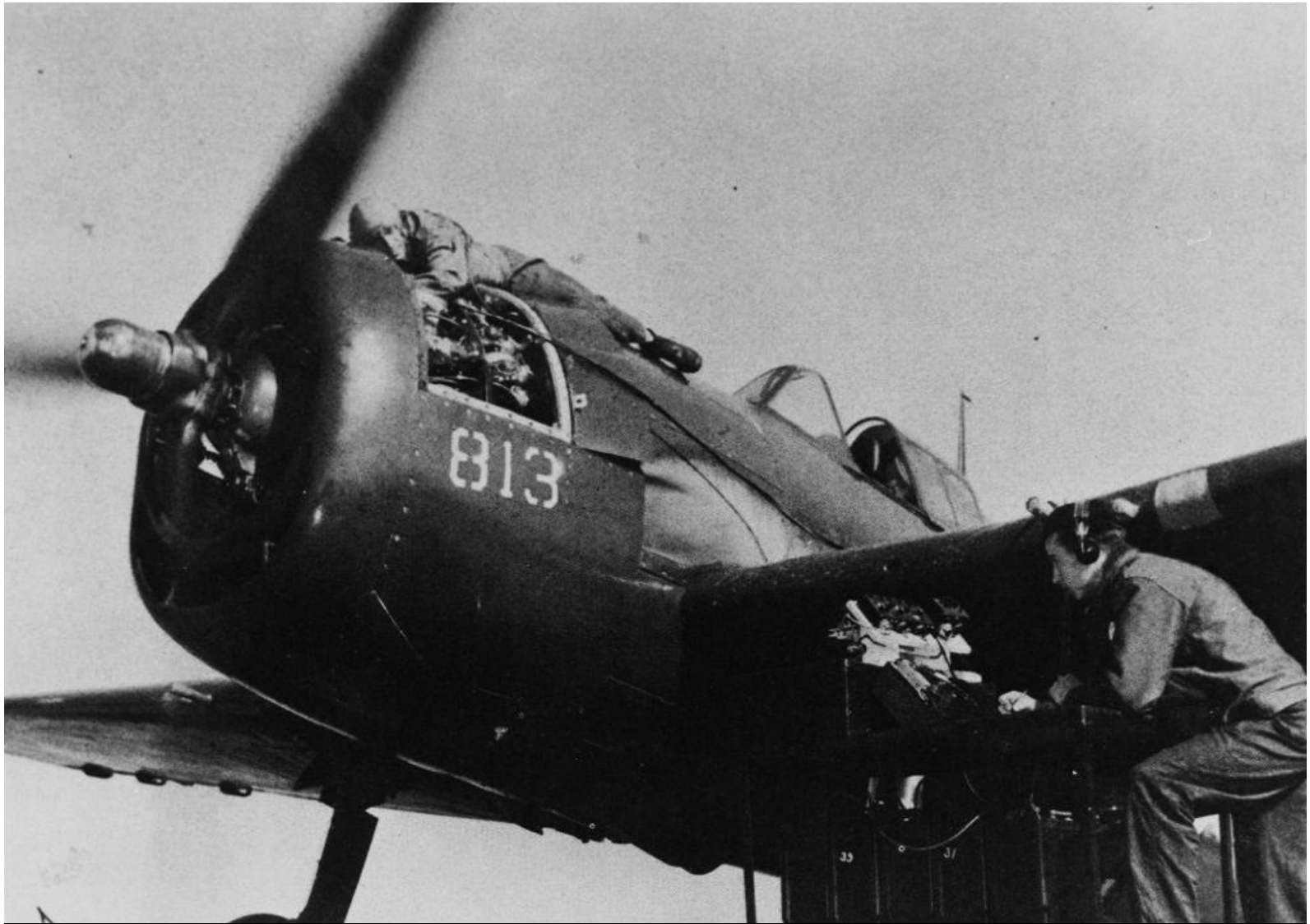
Station employees and their families attend an Independence Day War Bond Rally at Pax in 1944.



Consolidated P2Y flying boats like this were stationed at Pax during its early years.



**Capt. J.D. Barner, Commander, Naval Air Test Center,
inspects Coast Guard horses at
NAS Patuxent River in 1945.**

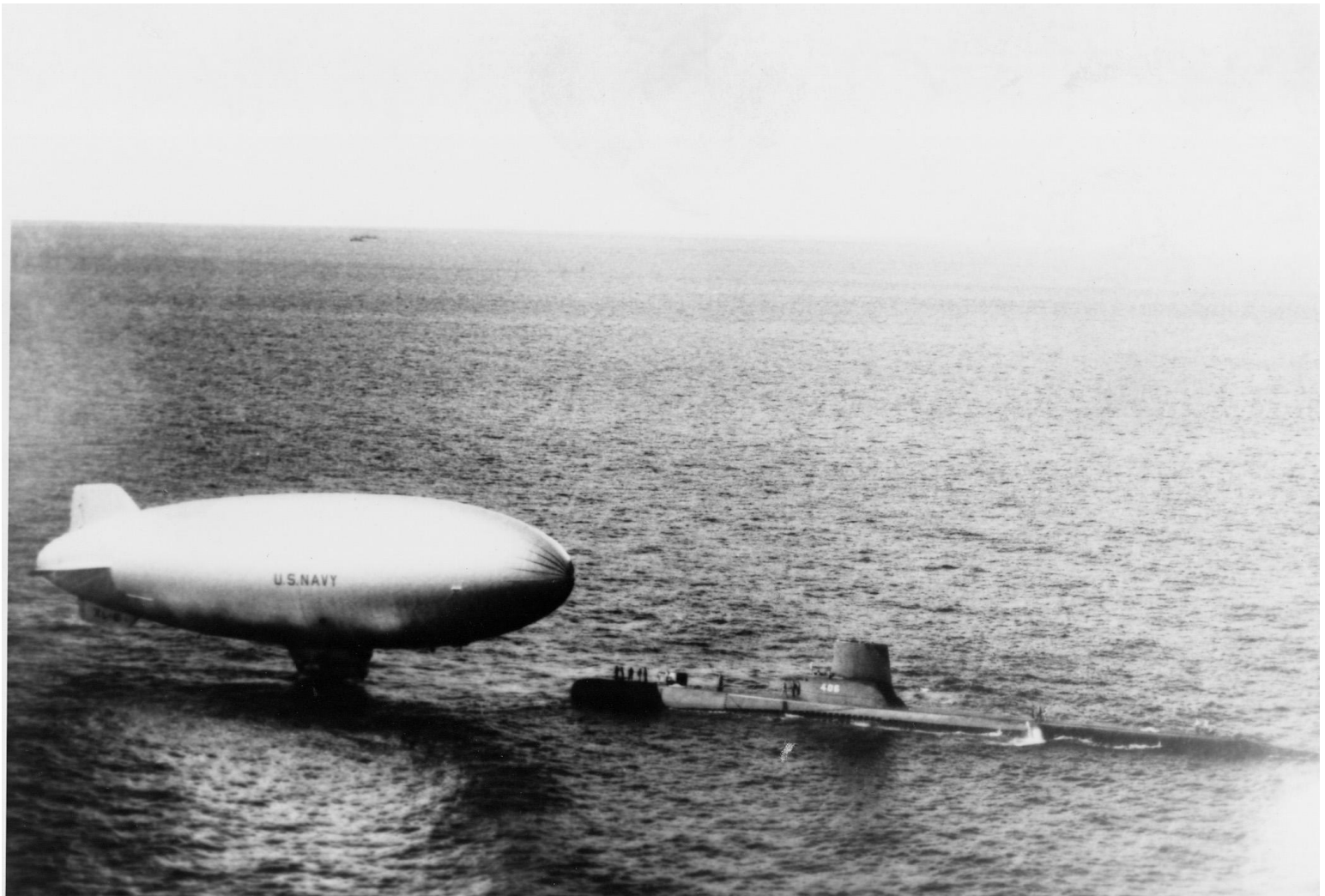


**Mechanics at Pax River work on an
Grumman F6F *Hellcat*.**

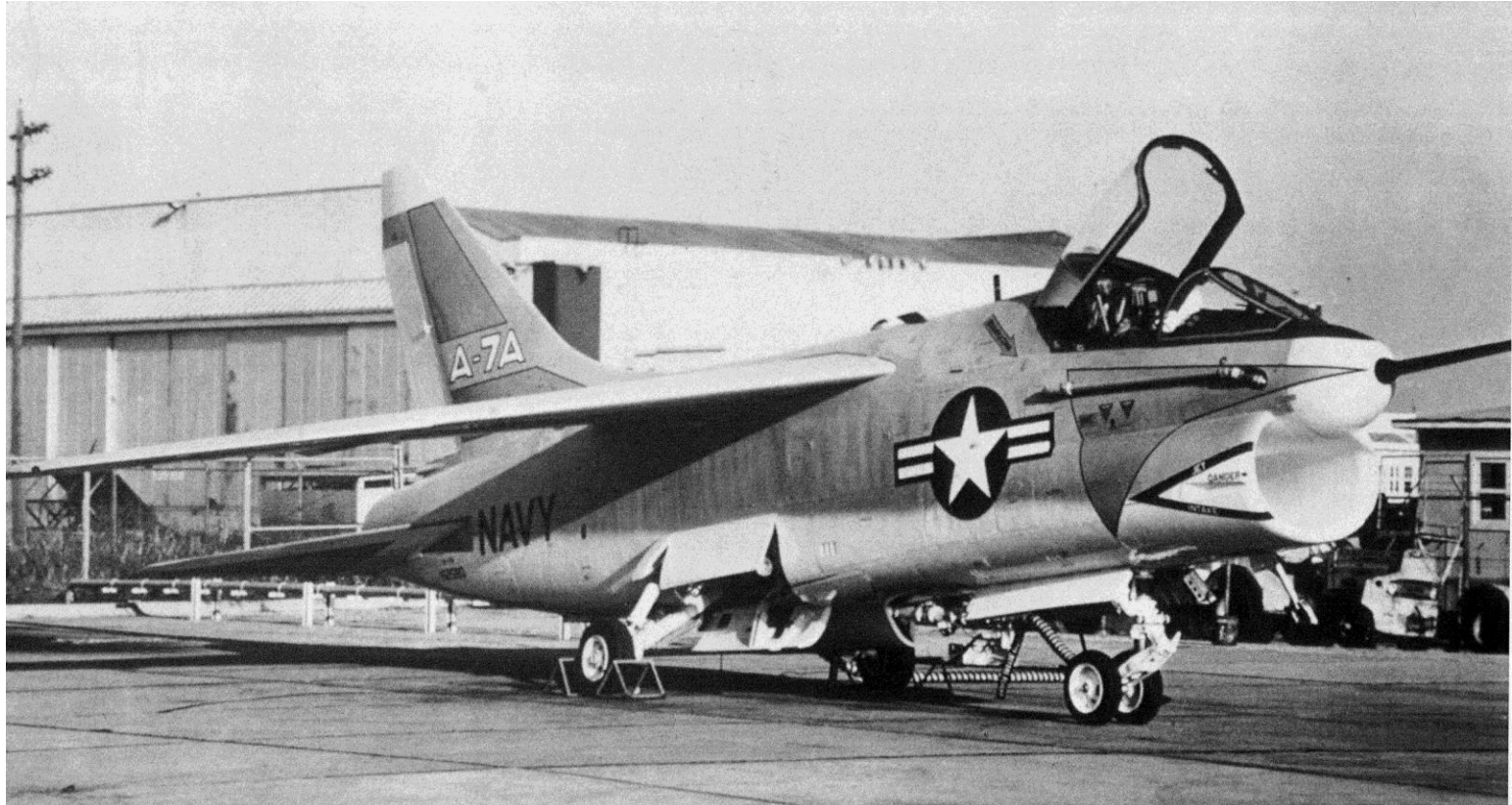


A Grumman F6F *Hellcat* flies over Pax River.





An airship reserve with *USS Sea Poacher*.



The first A-7A with an 11,350 pound thrust Pratt and Whitney engine flew in September 1965.



**Grumman F9F-2
Panther jet in flight
over Pax River.**